



OFFICE SPACE FOR LEASE 232 E MAIN ST, BARRINGTON, IL



BUILDING FEATURES:

- Outstanding 2,400 SF Office Space in Downtown Barrington
- 2nd Story Office Space Located Above Ciao Baby
- Five Private Offices, Large Open Area
- Great Windowlines, Hardwood Floors Throughout
- Private Restroom, Dedicated Rear Entry
- Ample Parking
- **Lease Rate: \$15.00-\$18.00 SF Modified Gross**
Includes Low Lake County Taxes



FOR MORE INFORMATION:

CHRISTINA ADAMS

Direct: 847.246.9634

christina@chicagolandcommercial.com

LEASING | SALES | TENANT ADVISORY | MANAGEMENT



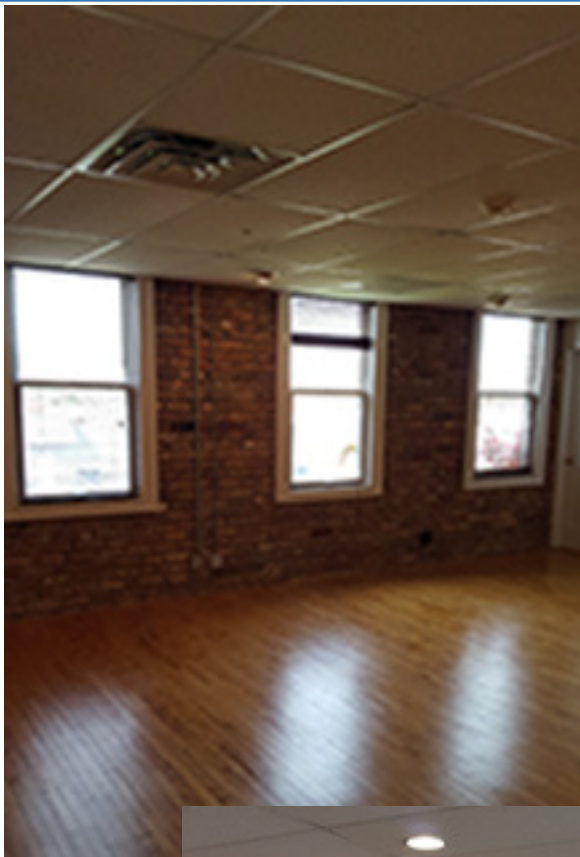
**Chicagoland
Commercial**
REAL ESTATE

4811 Emerson Ave, Suite 112, Palatine, IL 60067
www.chicagolandcommercial.com



OFFICE SPACE FOR LEASE 232 E MAIN ST, BARRINGTON, IL

INTERIOR PHOTOS



FOR MORE INFORMATION:

CHRISTINA ADAMS
Direct: 847.246.9634
christina@chicagolandcommercial.com

LEASING | SALES | TENANT ADVISORY | MANAGEMENT



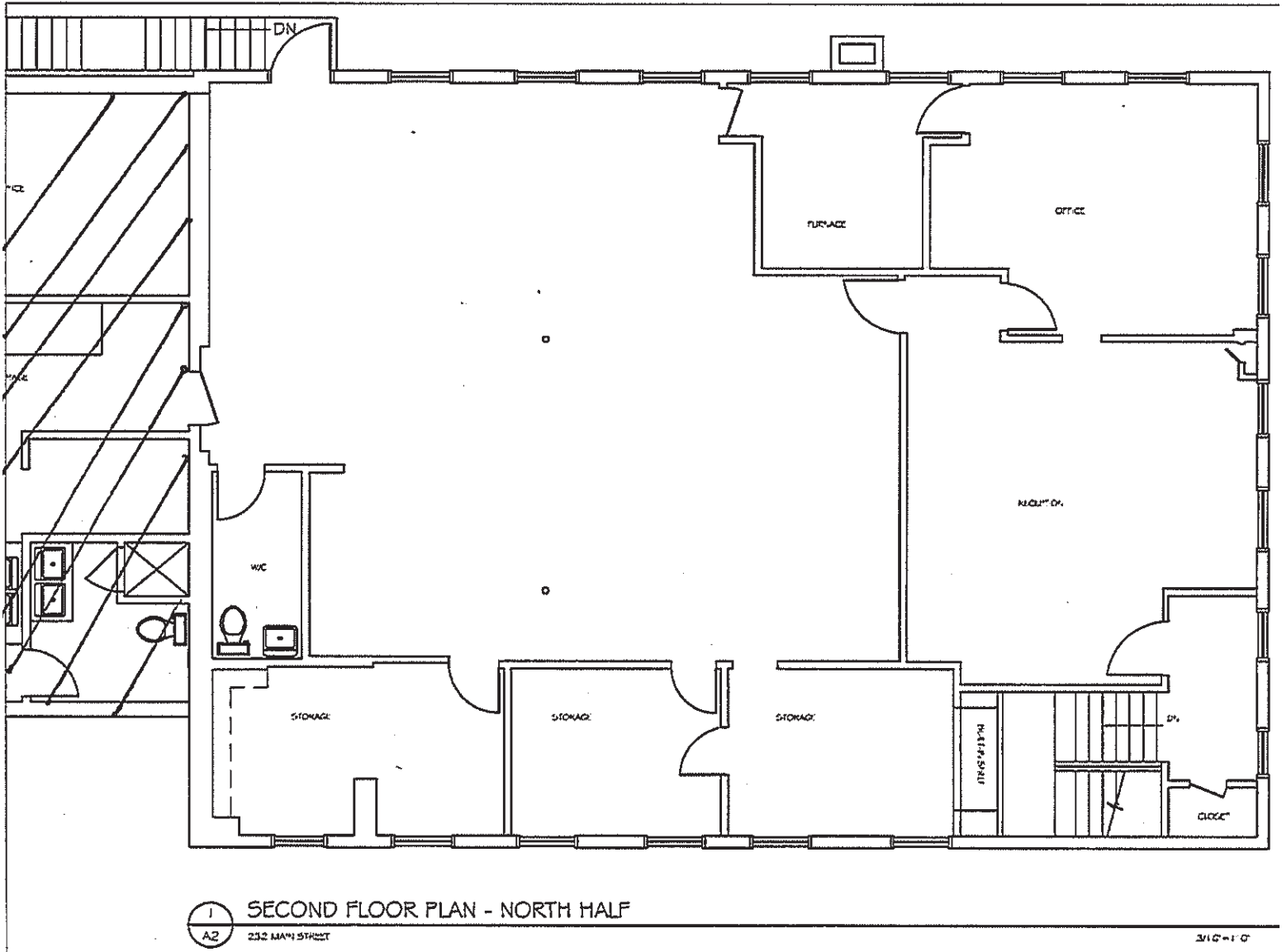
**Chicagoland
Commercial**
REAL ESTATE

4811 Emerson Ave, Suite 112, Palatine, IL 60067
www.chicagolandcommercial.com



OFFICE SPACE FOR LEASE 232 E MAIN ST, BARRINGTON, IL

SECOND FLOOR PLAN



FOR MORE INFORMATION:

CHRISTINA ADAMS
Direct: 847.246.9634
christina@chicagolandcommercial.com



4811 Emerson Ave, Suite 112, Palatine, IL 60067
www.chicagolandcommercial.com