



# CLASS A OFFICE/RETAIL SPACE FOR LEASE

## UBS BUILDING

303 E MAIN ST, BARRINGTON, IL

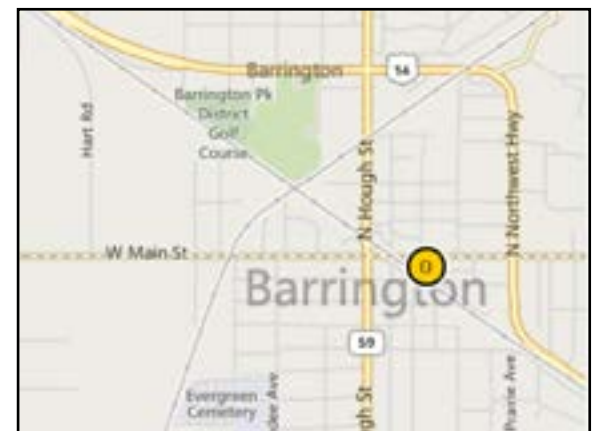


### BUILDING FEATURES:

- Class A Office/Retail Space in Downtown Barrington
- 857-10,273 SF Available Immediately
- Built in 2000
- Great Window-Lines and Efficient Layouts
- Located directly in downtown Barrington
- Walking Distance to Barrington Metra Station
- Building offers Fiber/T1
- 2nd Floor Space has Private Deck!
- Heated Indoor and Ample Outdoor Parking
- Near Restaurants, Shopping and Hotels
- On-site Property Management
- Exterior Signage Possible for 1st Floor
- Join Tenants as UBS, Berkshire-Hathaway, Athena Global Energy, EcoPlanet Capital Management
- \$10.00 PSF in 2014 RETaxes/Ops

### AVAILABLE SPACE:

SUITE	SIZE (SF)	MIN CTG	MAX CTG	PRICING
100	857-4,676	857	10,273	\$15.00 - 20.00 NET
102	2,727	2,727	7,403	\$15.00 - 20.00 NET
203	1,762	1,762	1,762	\$20.00 - 24.00 NET



### FOR MORE INFORMATION:

RANDY OLCZYK  
 Direct: 847.246.9611  
 randy@chicagolandcommercial.com

ANDREW BLOCK  
 Direct: 847.246.9636  
 andrew@chicagolandcommercial.com



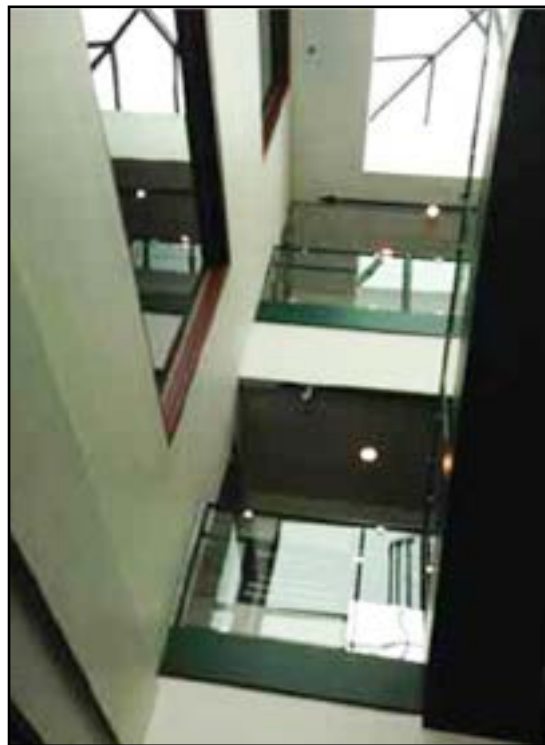
1240 W. Northwest Hwy., Palatine, IL 60067



# CLASS A OFFICE SPACE FOR LEASE

*UBS BUILDING*

303 E MAIN ST, BARRINGTON, IL



## FOR MORE INFORMATION:

RANDY OLCZYK  
Direct: 847.246.9611  
randy@chicagolandcommercial.com

ANDREW BLOCK  
Direct: 847.246.9636  
andrew@chicagolandcommercial.com



**Chicagoland  
Commercial  
REAL ESTATE**

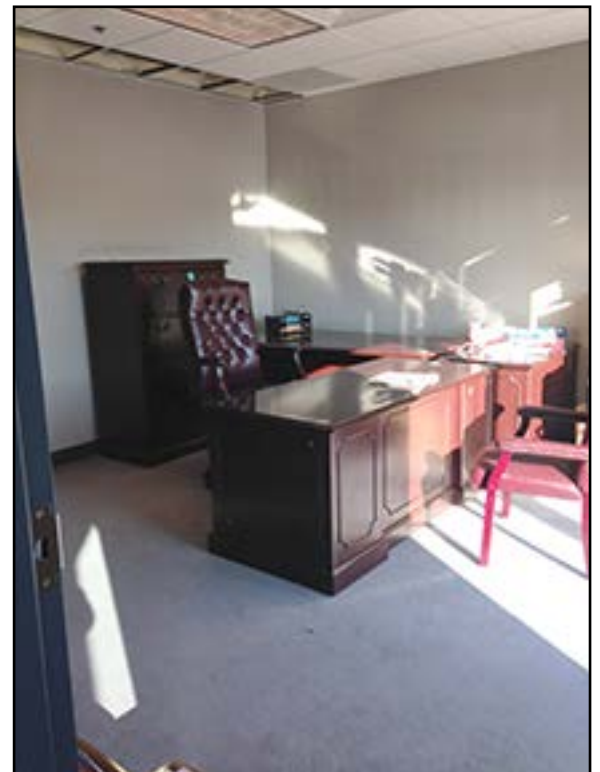
1240 W. Northwest Hwy., Palatine, IL 60067



# CLASS A OFFICE SPACE FOR LEASE

UBS BUILDING

303 E MAIN ST, BARRINGTON, IL



## FOR MORE INFORMATION:

RANDY OLCZYK  
Direct: 847.246.9611  
randy@chicagolandcommercial.com

ANDREW BLOCK  
Direct: 847.246.9636  
andrew@chicagolandcommercial.com



**Chicagoland  
Commercial**  
REAL ESTATE

1240 W. Northwest Hwy., Palatine, IL 60067



# CLASS A OFFICE SPACE FOR LEASE

UBS BUILDING

303 E MAIN ST, BARRINGTON, IL

## FIRST FLOOR:



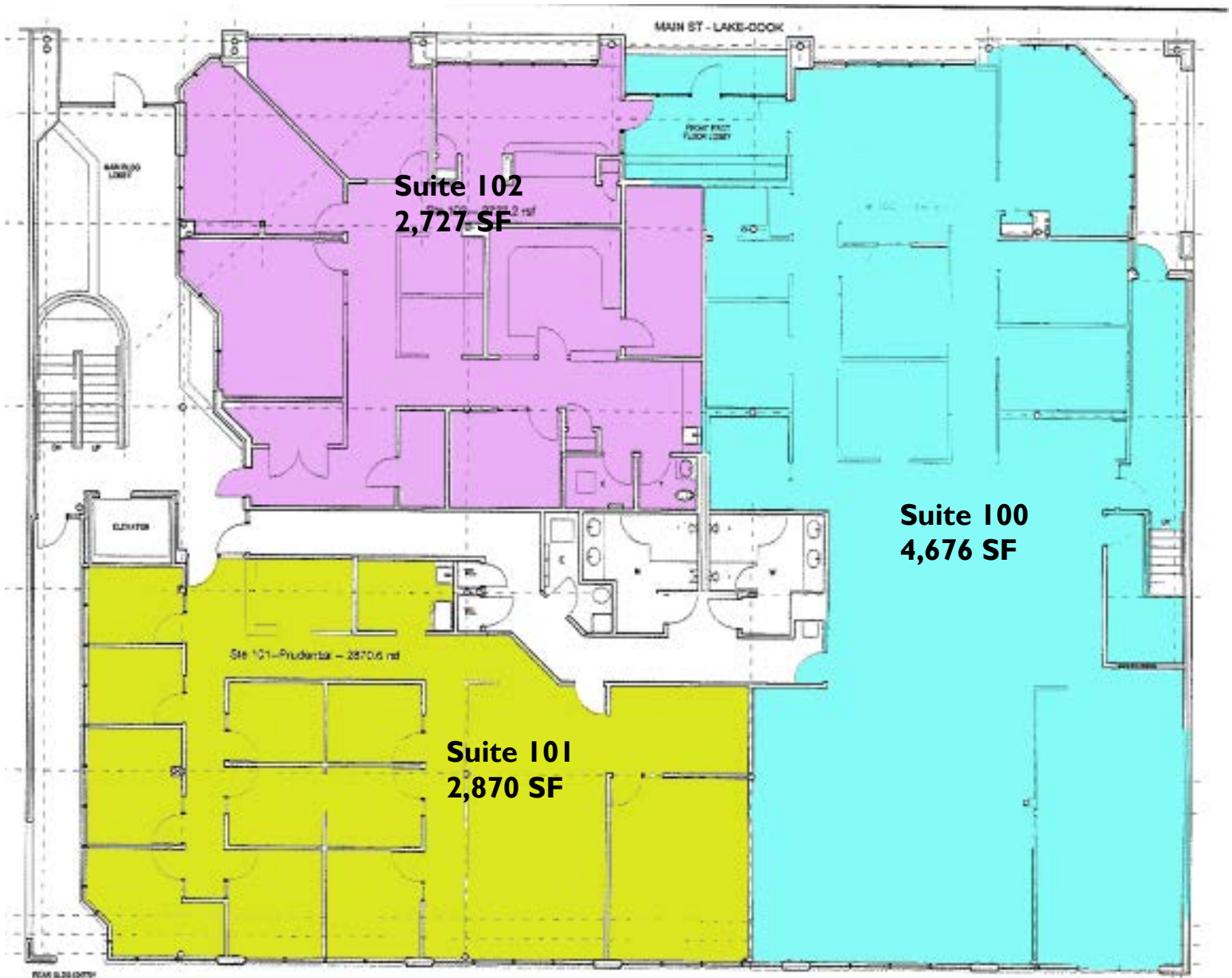
2,727 SF Contiguous up to 10,273 SF



2,870 SF Contiguous up to 10,273 SF



4,676 SF Divisible down to 2,951 SF and 1,713 SF



## FOR MORE INFORMATION:

RANDY OLCZYK  
 Direct: 847.246.9611  
 randy@chicagolandcommercial.com

ANDREW BLOCK  
 Direct: 847.246.9636  
 andrew@chicagolandcommercial.com



1240 W. Northwest Hwy., Palatine, IL 60067



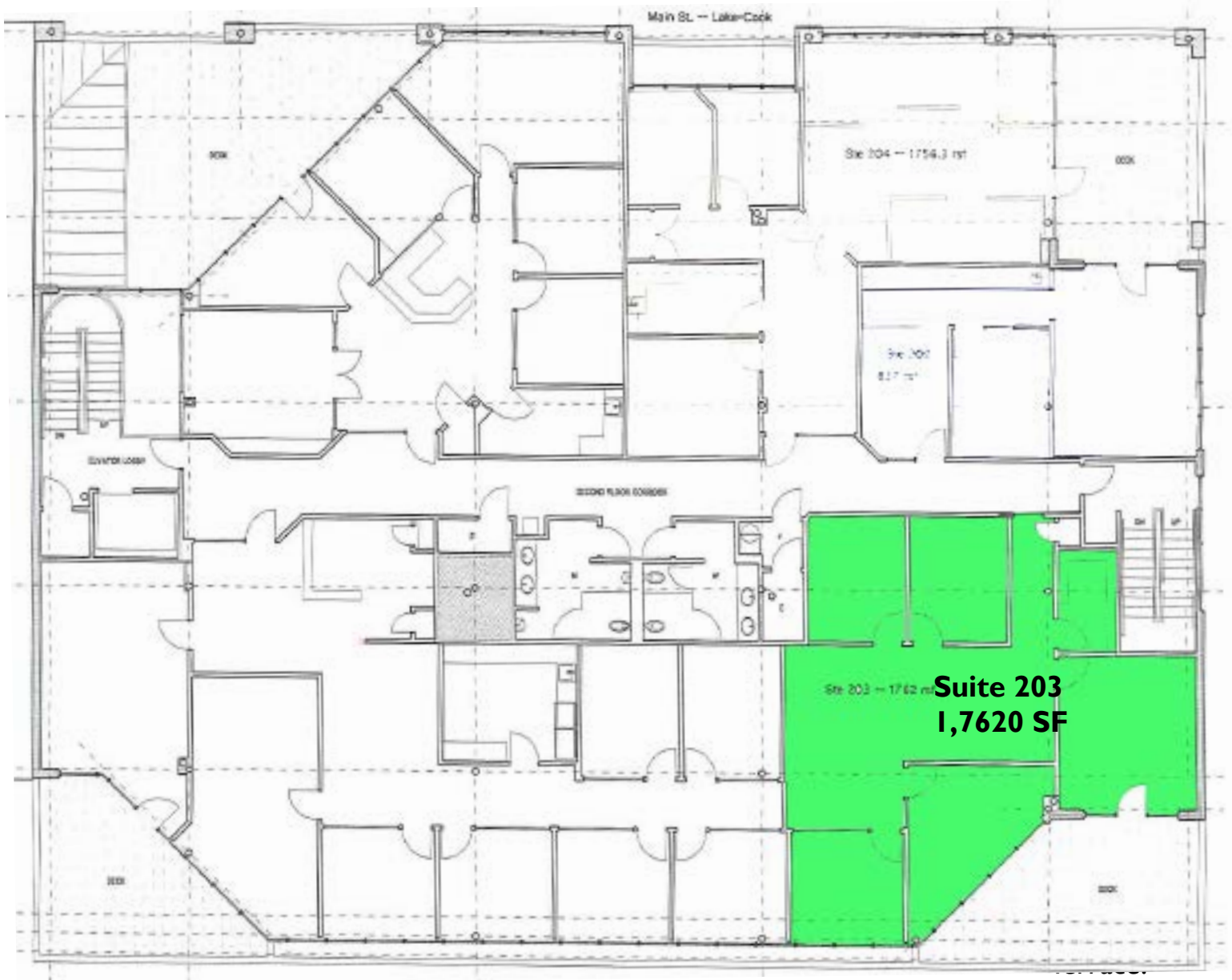
# CLASS A OFFICE SPACE FOR LEASE

UBS BUILDING

303 E MAIN ST, BARRINGTON, IL

## SECOND FLOOR:

 1,762 SF



## FOR MORE INFORMATION:

RANDY OLCZYK  
Direct: 847.246.9611  
randy@chicagolandcommercial.com

ANDREW BLOCK  
Direct: 847.246.9636  
andrew@chicagolandcommercial.com



1240 W. Northwest Hwy., Palatine, IL 60067