



OFFICE SPACE FOR LEASE

777 Lake Zurich Road, Barrington, IL 60010



Building Features:

- 2,382SF Professional Office Space With Large Adjoining Patio
- Open Floor Plan With Six Private Offices, Conference Room, Bull Pen
- Freshly Painted, Carpeted
- Private Building Entry, Steps From Ample Parking

Office Features:

777 Lake Zurich Road, with Class A building finishes, steps from Citizen's Park with walking trails, tennis and basketball courts, performance stage and picnic areas available for business gatherings is a fully-equipped workplace. A large building conference room is available at no charge, a central kitchen includes Starbuck's coffee, private bathrooms have showers! Well-located between downtown Barrington and the Lake Zurich retail corridor, 777 Lake Zurich Road is a six block walk and easy drive to the Metra station, restaurants, banks, shopping. On site management, low Lake County taxes, 40 minutes to O'Hare International Airport—the choice is obvious.



For More Information:

CHRISTINA ADAMS
1240 W. Northwest Hwy.
Palatine, IL 60067
Direct: 847.246.9634
christina@chicagolandcommercial.com
www.chicagolandcommercial.com

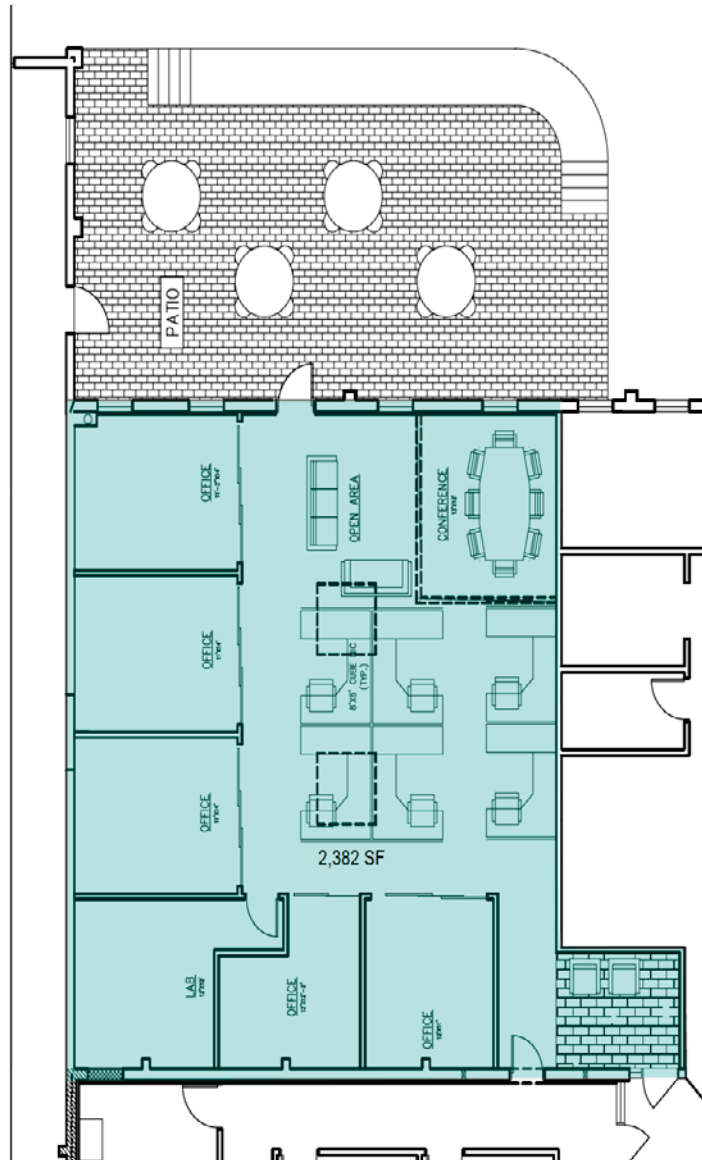


Leasing | Sales | Tenant Advisory | Management



OFFICE SPACE FOR LEASE

777 Lake Zurich Road, Barrington, IL 60010



For More Information:

CHRISTINA ADAMS
1240 W. Northwest Hwy.
Palatine, IL 60067
Direct: 847.246.9634
christina@chicagolandcommercial.com
www.chicagolandcommercial.com



Leasing | Sales | Tenant Advisory | Management



OFFICE SPACE FOR LEASE

777 Lake Zurich Road, Barrington, IL 60010



CHRISTINA ADAMS
1240 W. Northwest Hwy.
Palatine, IL 60067
Direct: 847.246.9634
christina@chicagolandcommercial.com
www.chicagolandcommercial.com



Leasing | Sales | Tenant Advisory | Management