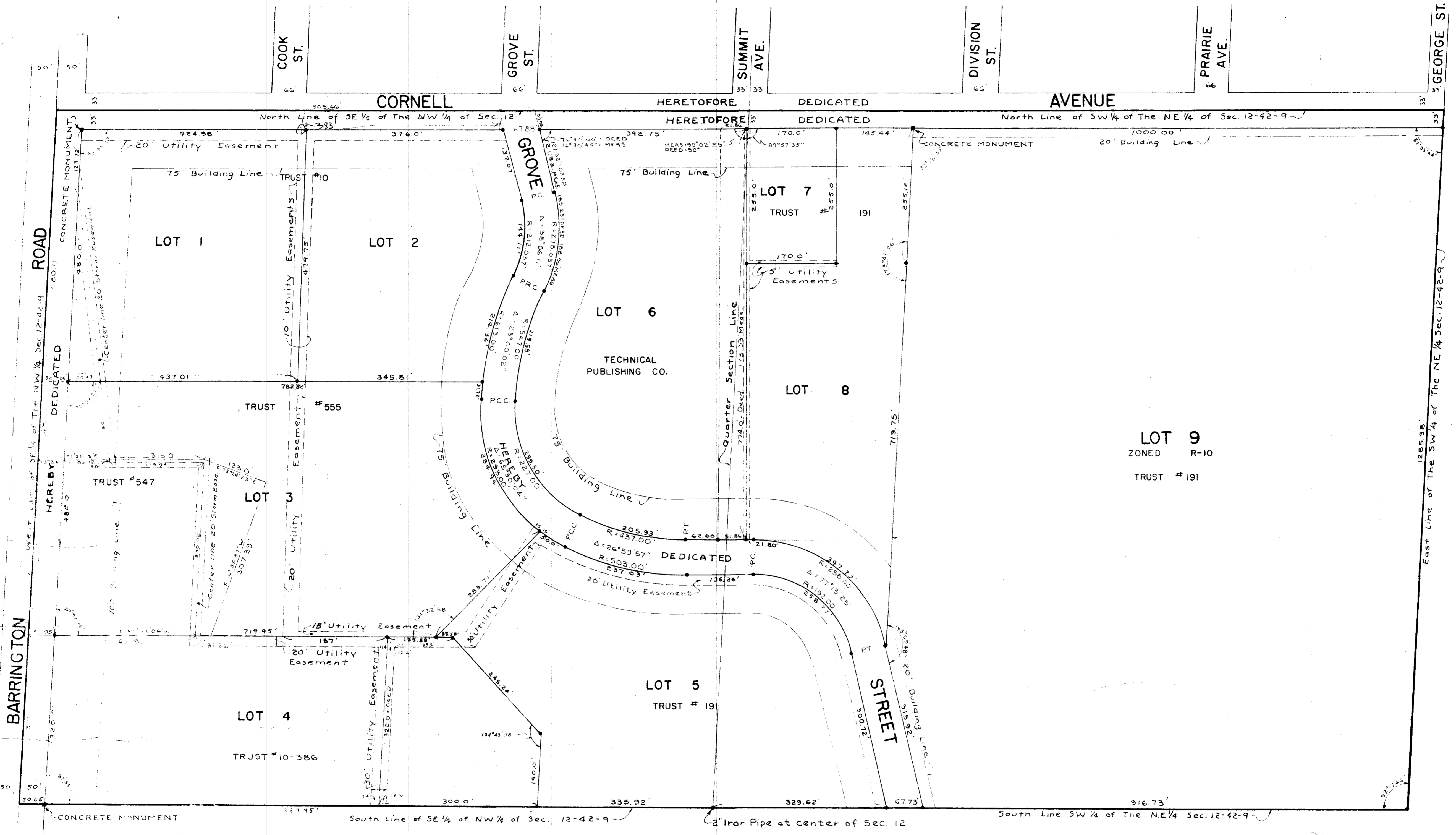


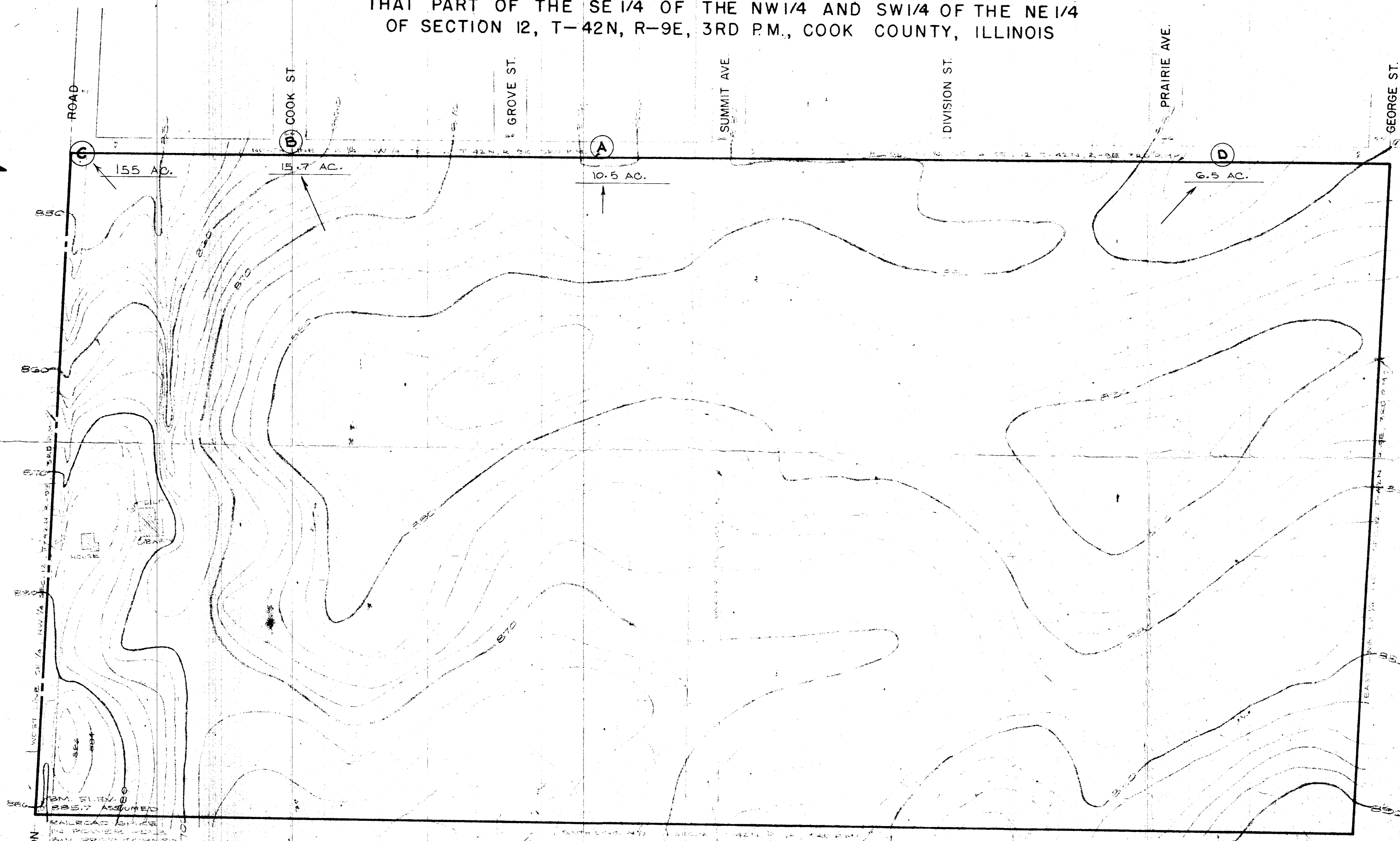
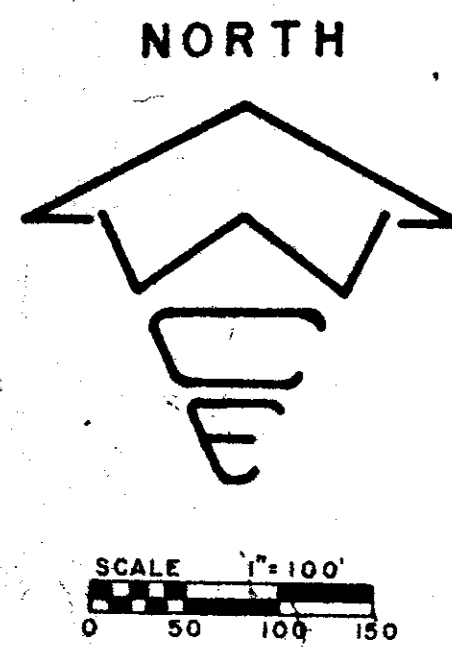
BARRINGTON SOUTHGATE UNIT NO. 1

BEING A SUBDIVISION OF THE SOUTHEAST QUARTER OF THE NORTHWEST QUARTER AND OF THE SOUTHWEST QUARTER OF THE NORTHEAST QUARTER OF SECTION 12, TOWNSHIP 42 NORTH, RANGE 9 EAST OF THE THIRD PRINCIPAL MERIDIAN IN THE VILLAGE OF BARRINGTON, COOK COUNTY, ILLINOIS.



TOPOGRAPHIC SURVEY

THAT PART OF THE SE 1/4 OF THE NW 1/4 AND SW 1/4 OF THE NE 1/4
OF SECTION 12, T-42N, R-9E, 3RD P.M., COOK COUNTY, ILLINOIS



SEC. 12
RAILROAD LINES
BY PENNER & WEAVER
AND JOHN E. SCHNEIDER

WIGHT CONSULTING ENGINEERS
BARRINGTON, ILLINOIS

PROJECT NO. BE-140 DRAWN BY W.S. CHECKED BY J.S.
DATE 1-2-65 BOOK NO. 24-65 APPROVED BY J.S.
SHEET NO. 1
REVISION DRAWN BY CHECKED BY DATE

SOUTHGATE

PART OF SECTION 12, TOWNSHIP 42N, RANGE 9E, 3RD P.M.
COOK COUNTY, BARRINGTON, ILLINOIS

STORM SEWER DETENTION DESIGN DATA

25 YEAR DURATION STORM

COEFFICIENT OF RUN-OFF

Commercial.....0.80

Multi-Family.....0.60

Single Family.....0.40

RATE OF RAINFALL

30 Min. - 1.8"

1 Hr. - 2.3"

2 Hr. - 2.6"

3 Hr. - 2.9"

6 Hr. - 3.5"

12 Hr. - 4.1"

24 Hr. - 4.6"