

LANGENDORF PARK PLAT OF CONSOLIDATION

IN THE NORTHWEST QUARTER OF THE SOUTHEAST QUARTER OF SECTION 35, AND THE SOUTHWEST QUARTER OF SECTION 36, TOWNSHIP 43 NORTH, RANGE 9 EAST OF THE THIRD PRINCIPAL MERIDIAN IN LAKE COUNTY ILLINOIS

COUNTY RECORDER CERTIFICATE

2008-00000000000000000000
Recorder: 2008-00000000000000000000
File: 6541790
Date: 11-13-09
Time: 10:41:03 AM
Total Pages: 80
Total Fees: \$100.00
Recorder: 6541790



BASIS FOR BEARINGS:
THE BASIS FOR BEARINGS SHOWN HEREON IS THE NORTH R.O.W. LINE OF THE CHICAGO AND NORTHWESTERN RAILROAD HAVING A BEARING OF S25°25'28"E

SCALE:
1" = 80'

RESIDENTIAL/COMMERCIAL/INDUSTRIAL
CIVIL ENGINEERING AND
SURVEYING SERVICES

and
Technology, Inc.
3922 W. MAIN STREET
MCHENRY, IL 60050
P: (815)363-9200
F: (815)363-9223
E: LANDTECH@LAND
TECHNOLOGYINC.COM
ILLINOIS PROFESSIONAL DESIGN FIRM
No. 184-001331

THIS DRAWING IS PROTECTED BY COPYRIGHT REGULATIONS. THE INFORMATION SHOWN MAY NOT, IN WHOLE OR PART, BE REPRODUCED WITHOUT THE WRITTEN CONSENT OF: LAND TECHNOLOGY, INC. 3922 W. MAIN STREET, MCHENRY, ILLINOIS, 60050. ALL LEGAL RIGHTS RESERVED.

CLIENT:
BARRINGTON PARK DISTRICT

DRAWN BY: SES

CHECK'D BY: TRC

DATE: 10/23/09

CONSOLIDATION PLAT
LANGENDORF PARK
BARRINGTON, ILLINOIS

PAGE 1 OF 2

DRAWING NUMBER:
08-177

BARRINGTON MANOR ALL OF BLOCKS 5,6,7
P.L.N. 13-35-402-001
BARRINGTON MANOR ALL BLOCKS 1 & 2 AND LOTS 1 TO LOT 12, AND 14 TO 17 INCLUDED IN BLOCK 3
P.L.N. 13-35-403-007
BARRINGTON MANOR LOTS 1 TO 12 INCLUDED IN BLOCK 4
P.L.N. 13-35-404-007
BARRINGTON MANOR LOT 13 BLOCK 3
P.L.N. 13-35-403-008
BARRINGTON MANOR LOT 11 BLOCK 3
P.L.N. 13-35-403-008
COUNTY CLERKS DIVISION LOT 11
P.L.N. 13-36-301-003
COUNTY CLERKS DIVISION LOT 8
P.L.N. 13-36-301-008
TOTAL AREA = 37.15 ACRES

OWNERS:
PARTY-BESTRIT CERTIFICATE
STATE OF ILLINOIS } S.S.
COUNTY OF COOK & LAKE } S.S.
APPROVED BY THE PRESIDENT AND BOARD OF COMMISSIONERS OF THE BARRINGTON PARK DISTRICT AT A MEETING HELD ON THE 22nd DAY OF September, A.D. 2009
BY: *[Signature]* PRESIDENT
[Signature] SECRETARY

COUNTY CLERK'S CERTIFICATE
STATE OF ILLINOIS } S.S.
COUNTY OF LAKE } S.S.
I, WILLARD R. HELANDER, COUNTY CLERK OF LAKE COUNTY, ILLINOIS, DO HEREBY CERTIFY THAT THERE ARE NO UNPAID CURRENT GENERAL TAXES, UNPAID CURRENT SPECIAL ASSESSMENTS OR UNPAID CURRENT SPECIAL ASSESSMENTS AGAINST ANY OF THE LAND INCLUDED IN THE DESCRIBED PROJECT. I FURTHER CERTIFY THAT I HAVE RECEIVED ALL STATUTORY FEES IN CONNECTION WITH THE PLAT.
GIVEN UNDER MY HAND AND SEAL OF THE COUNTY CLERK, LAKE COUNTY, ILLINOIS, THIS 11th DAY OF November, A.D. 2009.
[Signature]
LAKE COUNTY CLERK

ALL LOT DIMENSIONS ARE RECORD UNLESS OTHERWISE NOTED.
FIELD SURVEY COMPLETED 08/29/09.
STATE OF ILLINOIS } S.S.
COUNTY OF WAHNER } S.S.
I, TERENCE R. CARROLL, IN ILLINOIS PROFESSIONAL LAND SURVEYOR, HEREBY CERTIFY THAT A PLAT OF CONSOLIDATION HAS BEEN MADE UNDER MY DIRECTION AND SUPERVISION OF THE PROPERTY DESCRIBED AS FOLLOWS: BLOCK 1 TO LOTS 1 TO LOTS 12, LOTS 1 TO 8 & 10 INCLUSIVE, IN BLOCK 2, LOTS 1 TO 10 INCLUSIVE, 12, 14, 15, 16, AND 17 IN BLOCK 3, LOTS 11 AND 12 IN BLOCK 3, LOTS 1 TO 12 INCLUSIVE, IN BLOCK 4, LOTS 1 TO 12 INCLUSIVE, IN BLOCK 5, LOTS 1 TO 12 INCLUSIVE, IN BLOCK 6 AND LOTS 1 TO 12 INCLUSIVE, IN BLOCK 7, ALL IN BARRINGTON MANOR, BEING A SUBDIVISION OF PART OF THE NORTHWEST QUARTER OF THE SOUTHEAST QUARTER OF SECTION 35, TOWNSHIP 43 NORTH, RANGE 9 EAST OF THE THIRD PRINCIPAL MERIDIAN, ACCORDING TO THE PLAT THEREOF, RECORDED OCTOBER 5, 1927 AS DOCUMENT NUMBER IN BOOK "C" OF PLATS, PAGE 18 IN LAKE COUNTY ILLINOIS.
ALSO, LOTS 8 AND LOT 11 (EXCEPT THE WEST 250 FEET AND THE EAST 225.30 FEET OF THE NORTH 188 FEET THEREOF) AND ALSO (EXCEPT THE WESTERN PORTION THAT PART THEREOF SET FORTH FOR LOTS 8 AND 11 BY DOCUMENT # 2140241 ON MARCH 9, 1940 IN LAKE COUNTY, ILLINOIS) OF COUNTY CLERKS DIVISION OF UNDIVIDED LAND IN THE SOUTHWEST QUARTER OF SECTION 36 (EXCEPT PARCELS 1 & 2) IN TOWNSHIP 43, RANGE 9 EAST OF THE THIRD PRINCIPAL MERIDIAN, AND THAT THE PLAT HEREON DRAWN IS A CORRECT REPRESENTATION OF SAID CONSOLIDATION.
PART OF THE SUBJECT PROPERTY LIES WITHIN A FLOOD PLAIN OR FLOOD PRONE AREA OR A FLOOD WAY. I HAVE EXAMINED FLOOD HAZARD RISK MAP (COMMUNITY PANEL) NUMBER 170002021-1, REVISED NOVEMBER 18, 2008, AND HAVE DETERMINED THE SUBJECT PROPERTY LIES WITHIN ZONE "X", ZONE "X" SHAGGED, AND ZONE "AE".
I FURTHER CERTIFY THAT THIS PROPERTY IS WITHIN THE VILLAGE OF BARRINGTON, WHICH HAS ADOPTED AN OFFICIAL COMPREHENSIVE PLAN AND IS EXERCISING THE SPECIAL POWERS AUTHORIZED BY THE STATE OF ILLINOIS ACCORDING TO 65 ILCS 5/11-12-6.
DATED THIS 22ND DAY OF SEPTEMBER, A.D., 2009.
[Signature]
TERENCE R. CARROLL, ILLINOIS PROFESSIONAL LAND SURVEYOR 35-2859
LAND TECHNOLOGY INC., ILLINOIS PROFESSIONAL DESIGN FIRM
LICENSE EXPIRES 11/30/10

NOTARY PUBLIC CERTIFICATE
STATE OF ILLINOIS } S.S.
COUNTY OF LAKE } S.S.
I, *[Signature]*, NOTARY PUBLIC IN AND FOR THE COUNTY AND STATE OF ILLINOIS, DO HEREBY CERTIFY THAT *[Signature]* IS THE SAME PERSON WHOSE NAME IS REFERRED TO IN THE FOREGOING INSTRUMENT AND WHOSE NAME IS REFERRED TO IN THE FOREGOING INSTRUMENT AND WHOSE NAME IS REFERRED TO IN THE FOREGOING INSTRUMENT.
WITNESS MY HAND AND SEAL OF THE NOTARY PUBLIC OFFICE OF LAKE COUNTY, ILLINOIS, THIS 11th DAY OF November, A.D. 2009.
OFFICIAL SEAL
KARENLY BEHRENS
NOTARY PUBLIC, STATE OF ILLINOIS
NO. 00000000000000000000

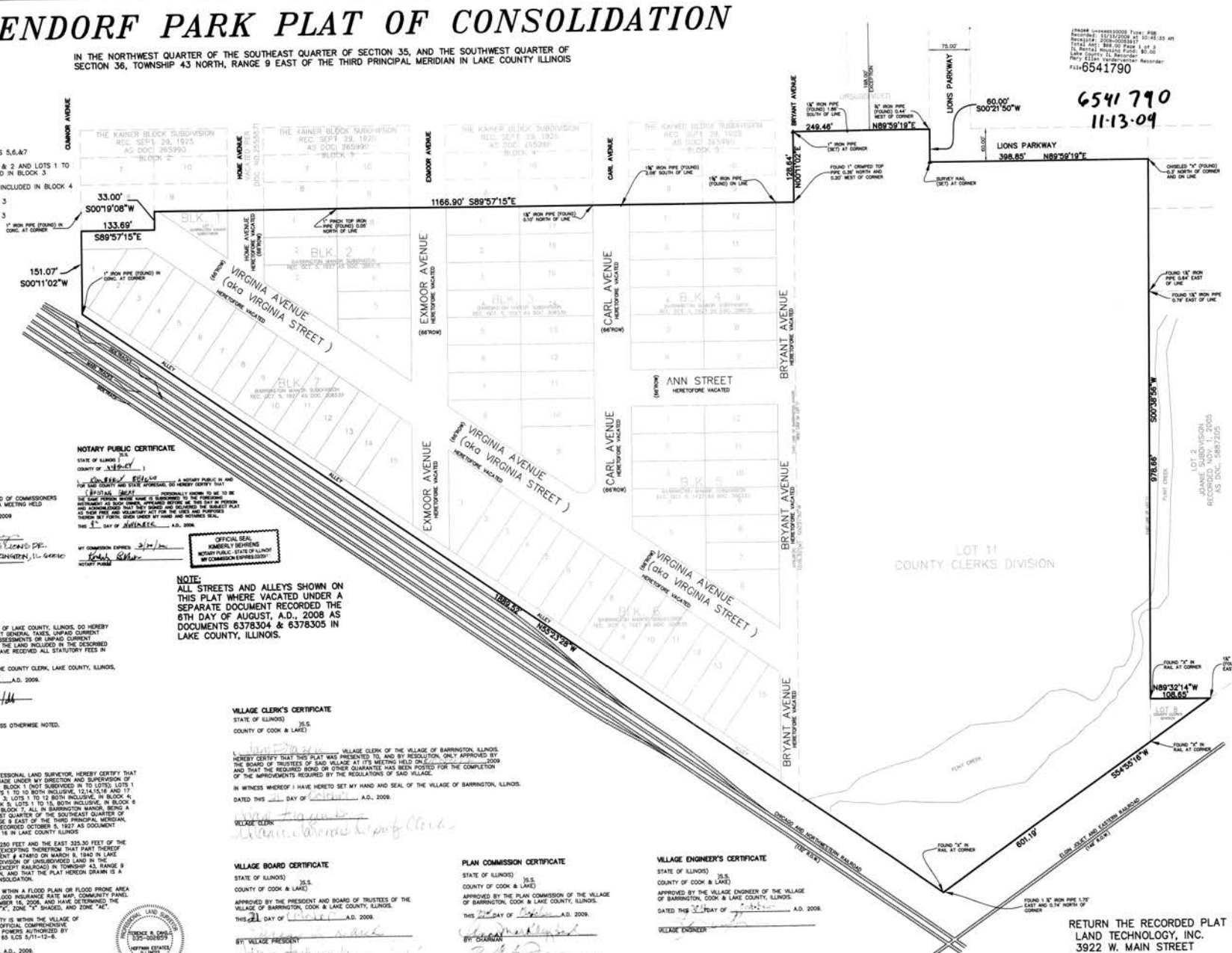
NOTE:
ALL STREETS AND ALLEYS SHOWN ON THIS PLAT WHERE VACATED UNDER A SEPARATE DOCUMENT RECORDED THE 8TH DAY OF AUGUST, A.D., 2008 AS DOCUMENTS 6378304 & 6378305 IN LAKE COUNTY, ILLINOIS.

VILLAGE CLERK'S CERTIFICATE
STATE OF ILLINOIS } S.S.
COUNTY OF COOK & LAKE } S.S.
I, *[Signature]*, VILLAGE CLERK OF THE VILLAGE OF BARRINGTON, ILLINOIS, HEREBY CERTIFY THAT THIS PLAT WAS PRESENTED TO, AND BY RESOLUTION, APPROVED BY THE BOARD OF TRUSTEES OF SAID VILLAGE AT ITS MEETING HELD ON MARCH 9, 2009 AND THAT THE REQUIRED BOND OR OTHER GUARANTEE HAS BEEN POSTED FOR THE COMPLETION OF THE IMPROVEMENTS REQUIRED BY THE REGULATIONS OF SAID VILLAGE.
IN WITNESS WHEREOF I HAVE SET MY HAND AND SEAL OF THE VILLAGE OF BARRINGTON, ILLINOIS, DATED THIS 22nd DAY OF September, A.D., 2009.
VILLAGE CLERK
[Signature]

VILLAGE BOARD CERTIFICATE
STATE OF ILLINOIS } S.S.
COUNTY OF COOK & LAKE } S.S.
APPROVED BY THE PRESIDENT AND BOARD OF TRUSTEES OF THE VILLAGE OF BARRINGTON, COOK & LAKE COUNTY, ILLINOIS, THIS 21st DAY OF September, A.D. 2009.
BY: *[Signature]* VILLAGE PRESIDENT
ATTEST: *[Signature]* VILLAGE CLERK

PLAN COMMISSION CERTIFICATE
STATE OF ILLINOIS } S.S.
COUNTY OF COOK & LAKE } S.S.
APPROVED BY THE PLAN COMMISSION OF THE VILLAGE OF BARRINGTON, COOK & LAKE COUNTY, ILLINOIS, THIS 21st DAY OF September, A.D. 2009.
BY: *[Signature]* CHAIRMAN
ATTEST: *[Signature]* SECRETARY

VILLAGE ENGINEER'S CERTIFICATE
STATE OF ILLINOIS } S.S.
COUNTY OF COOK & LAKE } S.S.
APPROVED BY THE VILLAGE ENGINEER OF THE VILLAGE OF BARRINGTON, COOK & LAKE COUNTY, ILLINOIS, DATED THIS 22nd DAY OF September, A.D. 2009.
VILLAGE ENGINEER
[Signature]



LOT 11
COUNTY CLERKS DIVISION

6541790
11-13-09

RETURN THE RECORDED PLAT TO:
LAND TECHNOLOGY, INC.
3922 W. MAIN STREET
MCHENRY, IL 60050

LANGENDORF PARK PLAT OF CONSOLIDATION EASEMENTS PAGE

COUNTY RECORDER CERTIFICATE

6541740
11-13-09



BASES FOR BEARINGS:
THE BASIS FOR BEARINGS
SHOWN HEREON IS THE
NORTH R.O.W. LINE OF
THE CHICAGO AND
NORTHWESTERN RAILROAD
HAVING A BEARING OF
55°23'28\"

SCALE:
1" = 80'

RESIDENTIAL/COMMERCIAL/INDUSTRIAL
CIVIL ENGINEERING AND
SURVEYING SERVICES



3922 F. MAIN STREET
McHENRY, IL 60050
P: (815)363-9200
F: (815)363-9223
E: LANDTECH@LAND
TECHNOLOGYINC.COM
ILLINOIS PROFESSIONAL DESIGN FIRM
No. 184-000331

THIS DRAWING IS PROTECTED
BY COPYRIGHT REGULATIONS.
THE INFORMATION SHOWN MAY
NOT IN WHOLE OR PART, BE
REPRODUCED WITHOUT THE
WRITTEN CONSENT OF
LAND TECHNOLOGY, INC.
3922 F. MAIN STREET
McHENRY, ILLINOIS, 60050
ALL LEGAL RIGHTS RESERVED.

CLIENT:
**BARRINGTON PARK
DISTRICT**

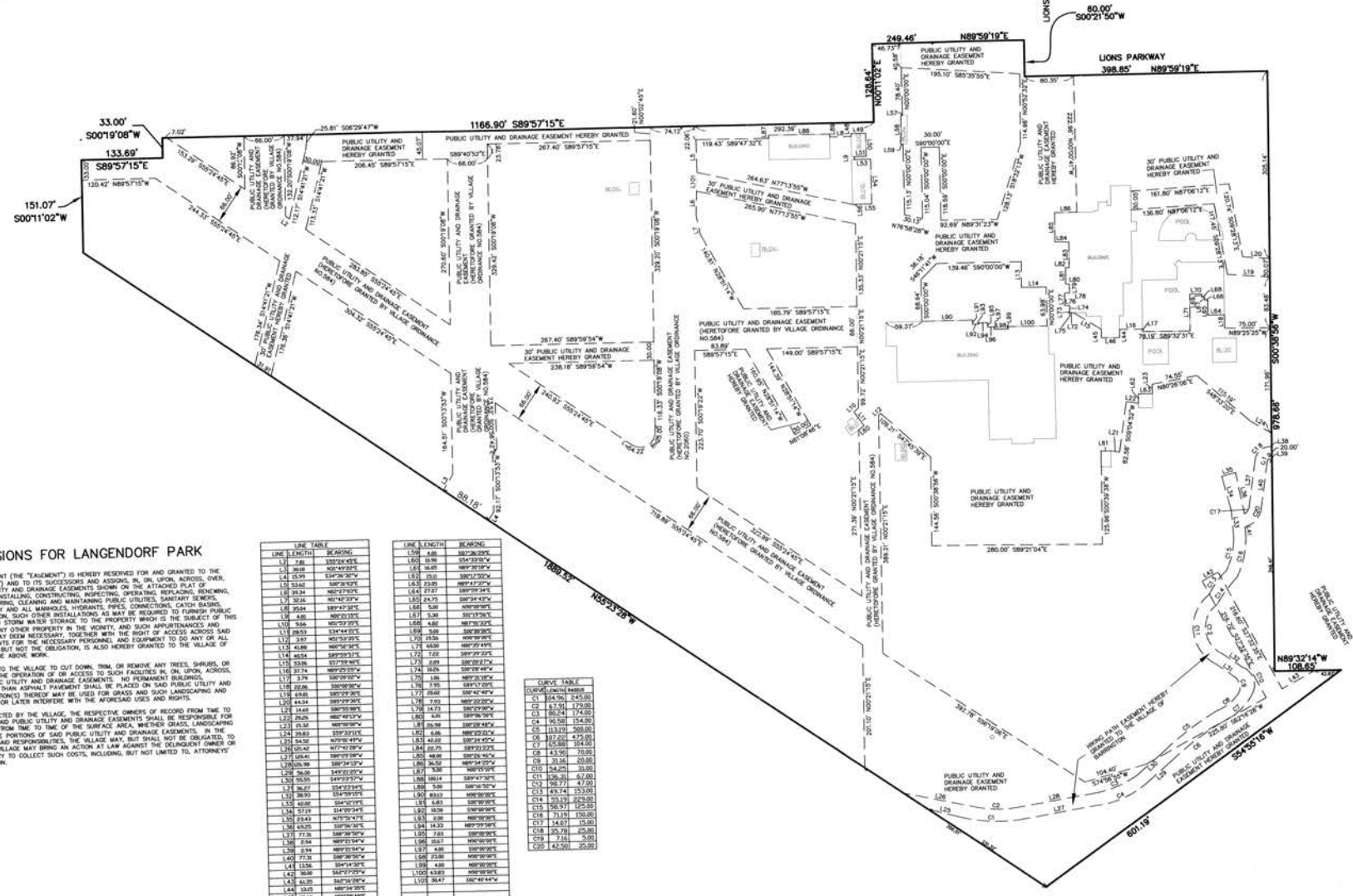
DRAWN BY: SRS

CHECK'D BY: TRC

DATE: 10/13/09

CONSOLIDATION PLAT
LANGENDORF PARK
BARRINGTON, ILLINOIS

PAGE 2 OF 2
DRAWING NUMBER:
08-177



EASEMENT PROVISIONS FOR LANGENDORF PARK

A PERMANENT, NON-EXCLUSIVE EASEMENT (THE "EASEMENT") IS HEREBY RESERVED FOR AND GRANTED TO THE VILLAGE OF BARRINGTON (THE "VILLAGE") AND TO ITS SUCCESSORS AND ASSIGNS IN, ON, UPON, ABOVE, OVER, UNDER AND THROUGH THE PUBLIC UTILITY AND DRAINAGE EASEMENTS SHOWN ON THE ATTACHED PLAT OF CONSOLIDATION FOR THE PURPOSES OF INSTALLING, CONSTRUCTING, INSPECTING, OPERATING, MAINTAINING, REPAIRING, ALTERING, ENLARGING, REMOVING, REPLACING, CLEANING AND MAINTAINING PUBLIC UTILITIES, SANITARY SEWERS, ALTERNIC, ENLARGING, REMOVING, REPLACING, CLEANING AND MAINTAINING PUBLIC UTILITIES, SANITARY SEWERS, STORM SEWERS, WATER MAINS, AND ANY AND ALL MANHOLES, HYDRANTS, PIPES, CONNECTIONS, CATCH BASINS, PUBLIC UTILITY AND DRAINAGE EASEMENTS HEREBY GRANTED BY VILLAGE ORDINANCE NO. 584.

THE RIGHT IS ALSO HEREBY GRANTED TO THE VILLAGE TO CUT DOWN, TRIM, OR REMOVE ANY TREES, SHRUBS, OR OTHER PLANTS THAT INTERFERE WITH THE OPERATION OF OR ACCESS TO SUCH FACILITIES IN, ON, UPON, ABOVE, OVER, UNDER OR THROUGH SAID PUBLIC UTILITY AND DRAINAGE EASEMENTS. NO PERMANENT BUILDINGS, STRUCTURES, OR IMPROVEMENT OTHER THAN APPOINTMENT SHALL BE PLACED ON SAID PUBLIC UTILITY AND DRAINAGE EASEMENTS, BUT SOME PORTIONS THEREOF MAY BE USED FOR GRASS AND SUCH LANDSCAPING AND OTHER PURPOSES THAT DO NOT THEN OR LATER INTERFERE WITH THE FORESAID USES AND RIGHTS.

LINE	LENGTH	BEARING
L1	7.81	S89°24'43\"
L2	4.39	S89°24'43\"
L3	1.53	S89°24'43\"
L4	1.53	S89°24'43\"
L5	1.53	S89°24'43\"
L6	1.53	S89°24'43\"
L7	1.53	S89°24'43\"
L8	1.53	S89°24'43\"
L9	1.53	S89°24'43\"
L10	1.53	S89°24'43\"
L11	1.53	S89°24'43\"
L12	1.53	S89°24'43\"
L13	1.53	S89°24'43\"
L14	1.53	S89°24'43\"
L15	1.53	S89°24'43\"
L16	1.53	S89°24'43\"
L17	1.53	S89°24'43\"
L18	1.53	S89°24'43\"
L19	1.53	S89°24'43\"
L20	1.53	S89°24'43\"
L21	1.53	S89°24'43\"
L22	1.53	S89°24'43\"
L23	1.53	S89°24'43\"
L24	1.53	S89°24'43\"
L25	1.53	S89°24'43\"
L26	1.53	S89°24'43\"
L27	1.53	S89°24'43\"
L28	1.53	S89°24'43\"
L29	1.53	S89°24'43\"
L30	1.53	S89°24'43\"
L31	1.53	S89°24'43\"
L32	1.53	S89°24'43\"
L33	1.53	S89°24'43\"
L34	1.53	S89°24'43\"
L35	1.53	S89°24'43\"
L36	1.53	S89°24'43\"
L37	1.53	S89°24'43\"
L38	1.53	S89°24'43\"
L39	1.53	S89°24'43\"
L40	1.53	S89°24'43\"
L41	1.53	S89°24'43\"
L42	1.53	S89°24'43\"
L43	1.53	S89°24'43\"
L44	1.53	S89°24'43\"
L45	1.53	S89°24'43\"
L46	1.53	S89°24'43\"
L47	1.53	S89°24'43\"
L48	1.53	S89°24'43\"
L49	1.53	S89°24'43\"
L50	1.53	S89°24'43\"
L51	1.53	S89°24'43\"
L52	1.53	S89°24'43\"
L53	1.53	S89°24'43\"
L54	1.53	S89°24'43\"
L55	1.53	S89°24'43\"
L56	1.53	S89°24'43\"
L57	1.53	S89°24'43\"
L58	1.53	S89°24'43\"
L59	1.53	S89°24'43\"
L60	1.53	S89°24'43\"

LINE	LENGTH	BEARING
L61	1.53	S89°24'43\"
L62	1.53	S89°24'43\"
L63	1.53	S89°24'43\"
L64	1.53	S89°24'43\"
L65	1.53	S89°24'43\"
L66	1.53	S89°24'43\"
L67	1.53	S89°24'43\"
L68	1.53	S89°24'43\"
L69	1.53	S89°24'43\"
L70	1.53	S89°24'43\"
L71	1.53	S89°24'43\"
L72	1.53	S89°24'43\"
L73	1.53	S89°24'43\"
L74	1.53	S89°24'43\"
L75	1.53	S89°24'43\"
L76	1.53	S89°24'43\"
L77	1.53	S89°24'43\"
L78	1.53	S89°24'43\"
L79	1.53	S89°24'43\"
L80	1.53	S89°24'43\"
L81	1.53	S89°24'43\"
L82	1.53	S89°24'43\"
L83	1.53	S89°24'43\"
L84	1.53	S89°24'43\"
L85	1.53	S89°24'43\"
L86	1.53	S89°24'43\"
L87	1.53	S89°24'43\"
L88	1.53	S89°24'43\"
L89	1.53	S89°24'43\"
L90	1.53	S89°24'43\"
L91	1.53	S89°24'43\"
L92	1.53	S89°24'43\"
L93	1.53	S89°24'43\"
L94	1.53	S89°24'43\"
L95	1.53	S89°24'43\"
L96	1.53	S89°24'43\"
L97	1.53	S89°24'43\"
L98	1.53	S89°24'43\"
L99	1.53	S89°24'43\"
L100	1.53	S89°24'43\"

CURVE	LENGTH	BEARING
C1	14.00	S45°00'00\"
C2	14.00	S45°00'00\"
C3	14.00	S45°00'00\"
C4	14.00	S45°00'00\"
C5	14.00	S45°00'00\"
C6	14.00	S45°00'00\"
C7	14.00	S45°00'00\"
C8	14.00	S45°00'00\"
C9	14.00	S45°00'00\"
C10	14.00	S45°00'00\"
C11	14.00	S45°00'00\"
C12	14.00	S45°00'00\"
C13	14.00	S45°00'00\"
C14	14.00	S45°00'00\"
C15	14.00	S45°00'00\"
C16	14.00	S45°00'00\"
C17	14.00	S45°00'00\"
C18	14.00	S45°00'00\"
C19	14.00	S45°00'00\"
C20	14.00	S45°00'00\"

RETURN THE RECORDED PLAT TO:
LAND TECHNOLOGY, INC.
3922 W. MAIN STREET
McHENRY, IL 60050