



OFFICE SPACE FOR LEASE OR SALE 201 SOUTH GROVE AVENUE, BARRINGTON, IL

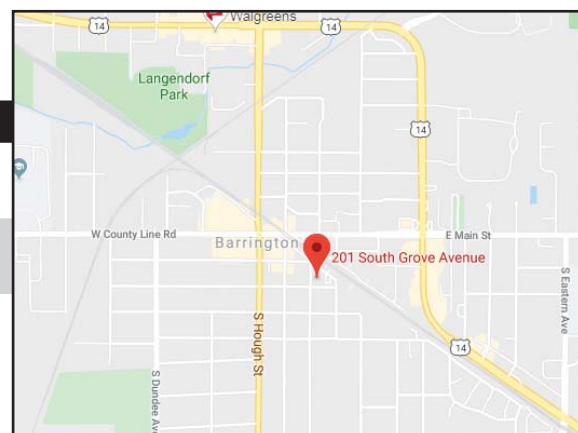


BUILDING FEATURES:

- Quality Office Space in Downtown Barrington
- 3,800-11,000 SF Office Condos For Sale
- Building renovations underway
- Great Window-Lines and Efficient Layouts
- Located directly next to the Barrington Metra Station
- Walking Distance to shopping & restaurants
- Common Lobby with 24 Hour Tenant Access & Elevator
- Ideal For Sales, Accountant or General Office Users
- Near Restaurants, Shopping and Metra
- Exterior Tenant Signage Available
- 5th Floor Condo Units Available for sale from 3,800-11,000 SF
- FOR SALE ONLY: \$85-\$115 PSF

AVAILABLE SPACE:

SUITE	SIZE (SF)	PRICING	AVAILABLE
5th Floor	3,800-11,000 SF	\$85-\$115 PSF	Immediately
4th Floor SOLD		***5th Floor Office Condos	* Only 1-2 Condo Units Remain



FOR MORE INFORMATION:

RANDY OLCZYK

Direct: 847.246.9611

randy@chicagolandcommercial.com

TOM CALLAHAN

Direct: 847.246.9636

tom@chicagolandcommercial.com



**Chicagoland
Commercial
REAL ESTATE**

4811 Emerson Ave Suite 112, Palatine, IL 60067



OFFICE SPACE FOR LEASE OR SALE

201 SOUTH GROVE AVENUE, BARRINGTON, IL

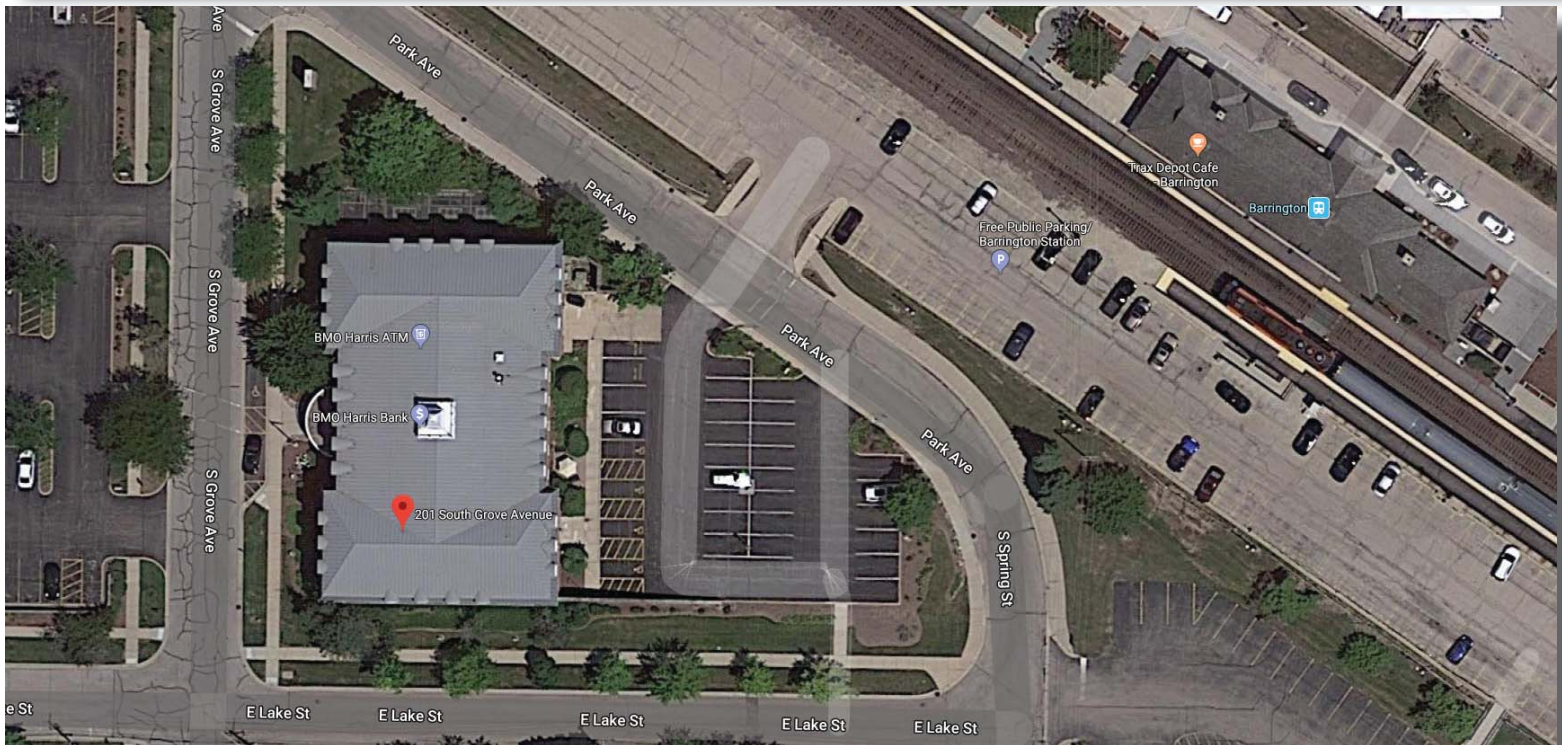
BUILDING PHOTOS





OFFICE SPACE FOR LEASE OR SALE 201 SOUTH GROVE AVENUE, BARRINGTON, IL

LOCATION MAP



FOR MORE INFORMATION:

RANDY OLCZYK
Direct: 847.246.9611
randy@chicagolandcommercial.com

TOM CALLAHAN
Direct: 847.246.9636
tom@chicagolandcommercial.com



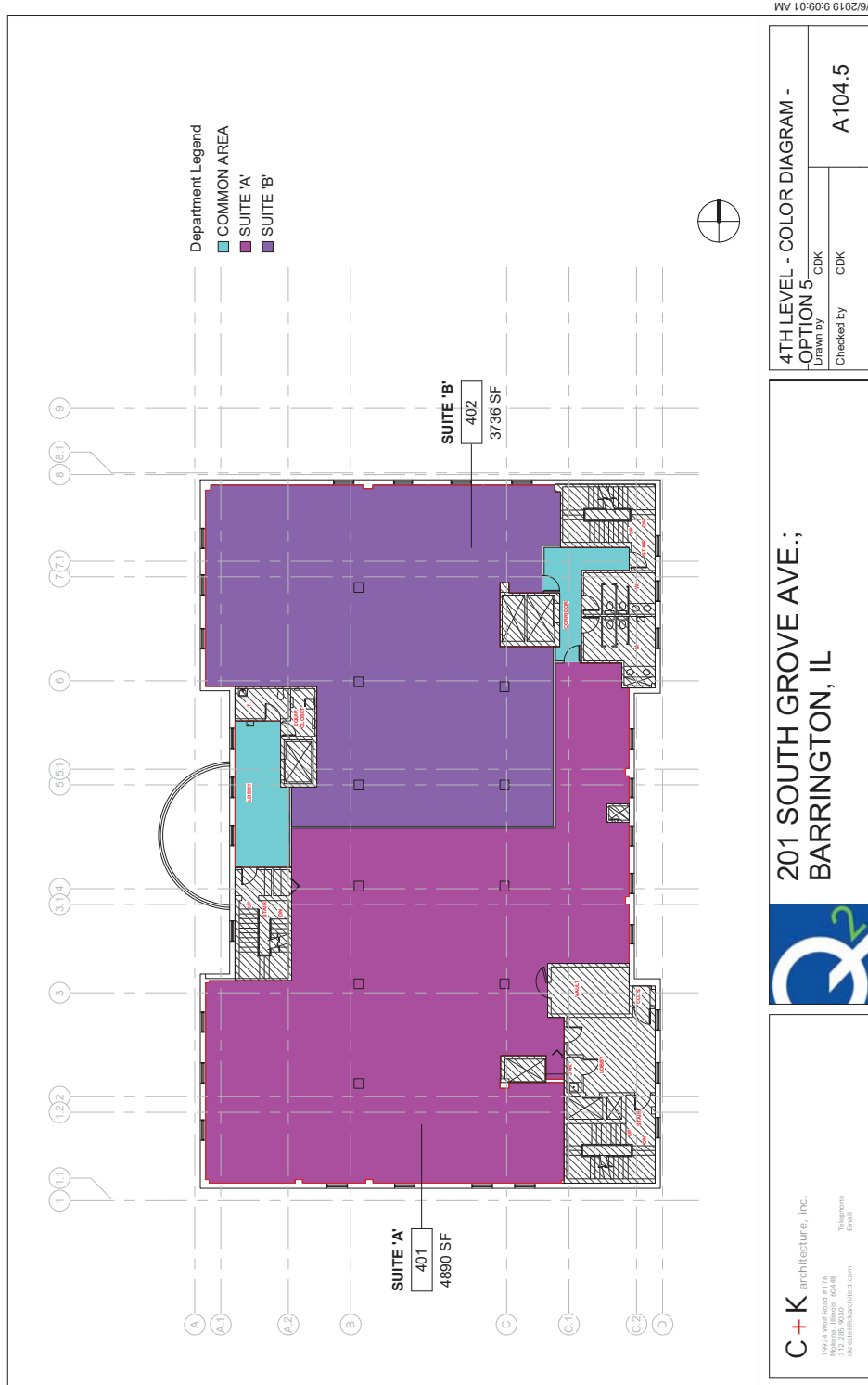
4811 Emerson Ave Suite 112, Palatine, IL 60067



OFFICE SPACE FOR LEASE OR SALE

201 SOUTH GROVE AVENUE, BARRINGTON, IL

5TH LEVEL FLOOR PLAN - 1 OR 2 UNITS REMAIN AS CONDO UNITS FOR SALE



FOR MORE INFORMATION:

RANDY OLCZYK
 Direct: 847.246.9611
 randy@chicagolandcommercial.com

TOM CALLAHAN
 Direct: 847.246.9636
 tom@chicagolandcommercial.com



Chicagoland
Commercial
 REAL ESTATE

4811 Emerson Ave Suite 112, Palatine, IL 60067

www.chicagolandcommercial.com